



MOcean 3000

Cd h j W U ' 7 c \ Y f Y b V W '
 H c a c [f U d \ m



OPHTHALMOLOGY / ENT



MOcean 3000

Optical Coherence Tomography



Equipped with LSO(Line Scanning Ophthalmoscopy), Mocean 3000 provides simultaneously high quality funds imaging, which is easy for physicians to localize the lesion.

- Macular HD Line
- Macular Six-Line Radial
- Macular Cube
- Glaucoma(Macular)
- Glaucoma(Disc)
- Informative Report
- Anterior HD Line
- Anterior Six -Line Radial
- En-Face Analysis
- Network System

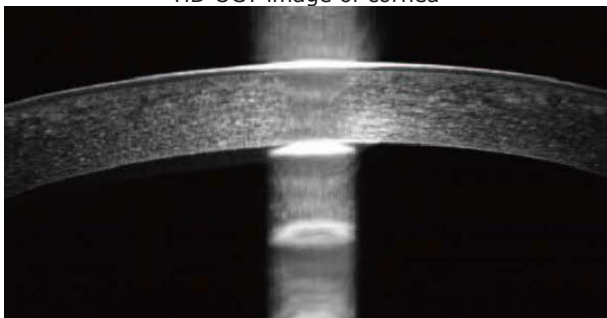
- HD wildfield image averaging (up to 50 images)
- 45° widefield real-time SLO fundus image
- Complete scanning of retina, RNFL & ganglion cell volume analysis, and anterior segment
- Progression analysis for glaucoma progression detection
- Auto search signal with one press
- Streamlined user interface



ANTERIOR SEGMENT

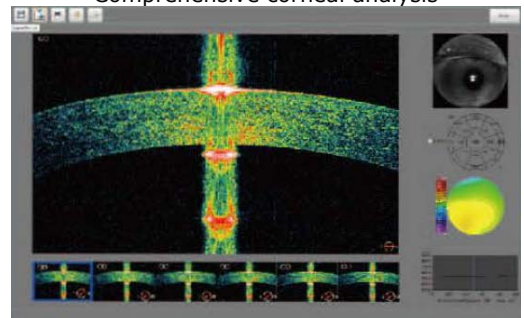
Anterior HD line

HD OCT image of cornea



Anterior segment six radial line

Comprehensive corneal analysis

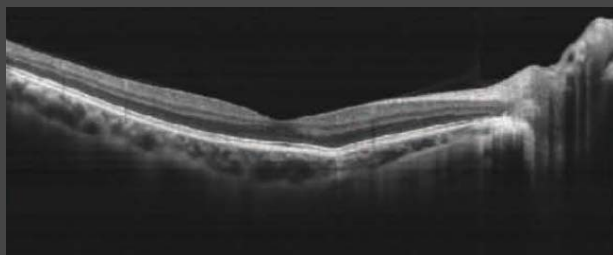


Software analysis

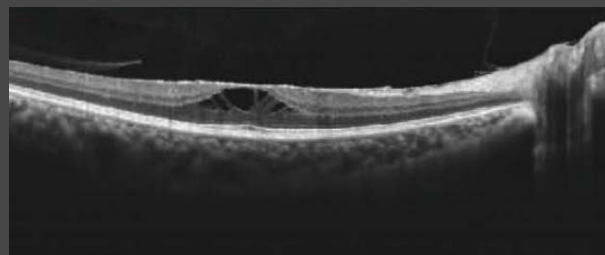
- Corneal pachymetry
- Corneal thickness map
- Corneal thickness profile

IMAGE GALLERY

Normal retina



Macular edema



Serous detachment of the neuroepithelium



CNV



MACULA

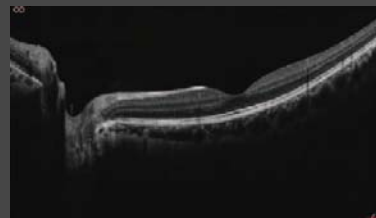
Macular HD line

HD OCT image with up to 50 times averaging for the highest image quality

* Scanning width is swichable between 6mm and 12mm



Scanning width 6mm



Scanning width 12mm

Macular six-line radial

HD OCT image with 5 times averaging, retinal analysis and ganglion cell volume analysis

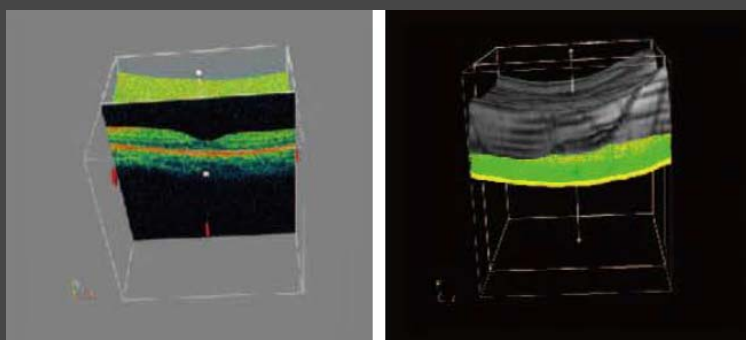
Software analysis

- ILM-RPE thickness nine zone map
- ILM-RPE thickness map
- ILM-RPE thickness profile
- NFL+GCL+IPL nine zone map
- NFL+GCL+IPL thickness map
- NFL+GCL+IPL thickness profile



Macular 3D

Providing precise quantitative analysis, 3D and C-scan analysis



Software analysis

- ILM-RPE thickness nine zone map
- ILM-RPE thickness map
- ILM-RPE volume
- NFL+GCL+IPL thickness map
- NFL+GCL+IPL volume figure
- NFL+GCL+IPL nine zone map
- 3D analysis
- C-scan analysis



Technical Features

OCT IMAGING

Methodology	Spectral Domain Oct
Optical Source	Super luminescent diode(SLD),840nm
Scan speed	36000 A-Scan/s
Axial Resolution (optical)	5 microns(optical)2.7 microns(digital)
Tranverse resolution	15 microns(optional),3 microns (digital)
A-Scan depth	2.3MM
Diopter range	-20D to +20D
Scan patterns	Macular: HD line scan (6mm or 12mm), 3D scan(6mm x 6mm) Anterior:HD Line scan (6mm),6-line radial scan

FUNDUS IMAGING

Methodology	Line scanning ophthalmoscopy(LSO)
Frame rate	10fps
Minimum pupil diameter	3.0mm
Field of view	47 degrees

SOFTWARE ANALYSIS

Macula	Retina thickness analysis,3D view, En-face analysis, Progression analysis
Glaucoma	RNFL analysis, Ganglion cell analysis, Cup-disk analysis, progression analysis, OU comparative analysis
Anterior segment	Manual measurement, Corneal thickness analysis
Others	DICOM conformance, Remote viewer software available

ELECTRICAL AND PHYSICAL

Weight	29kg
Dimension	450x250x450 mm
Source voltage	AC 100-240V
Frequency	50Hz-60Hz
Power input	90VA



ESSE3 srl, Via Garibaldi 30
14022 Castelnuovo D.B. (AT)
Tel +39 011 99 27 706
Fax +39 011 99 27 506
e-mail esse1@chirinet.it
web: www.esse3-medical.com

